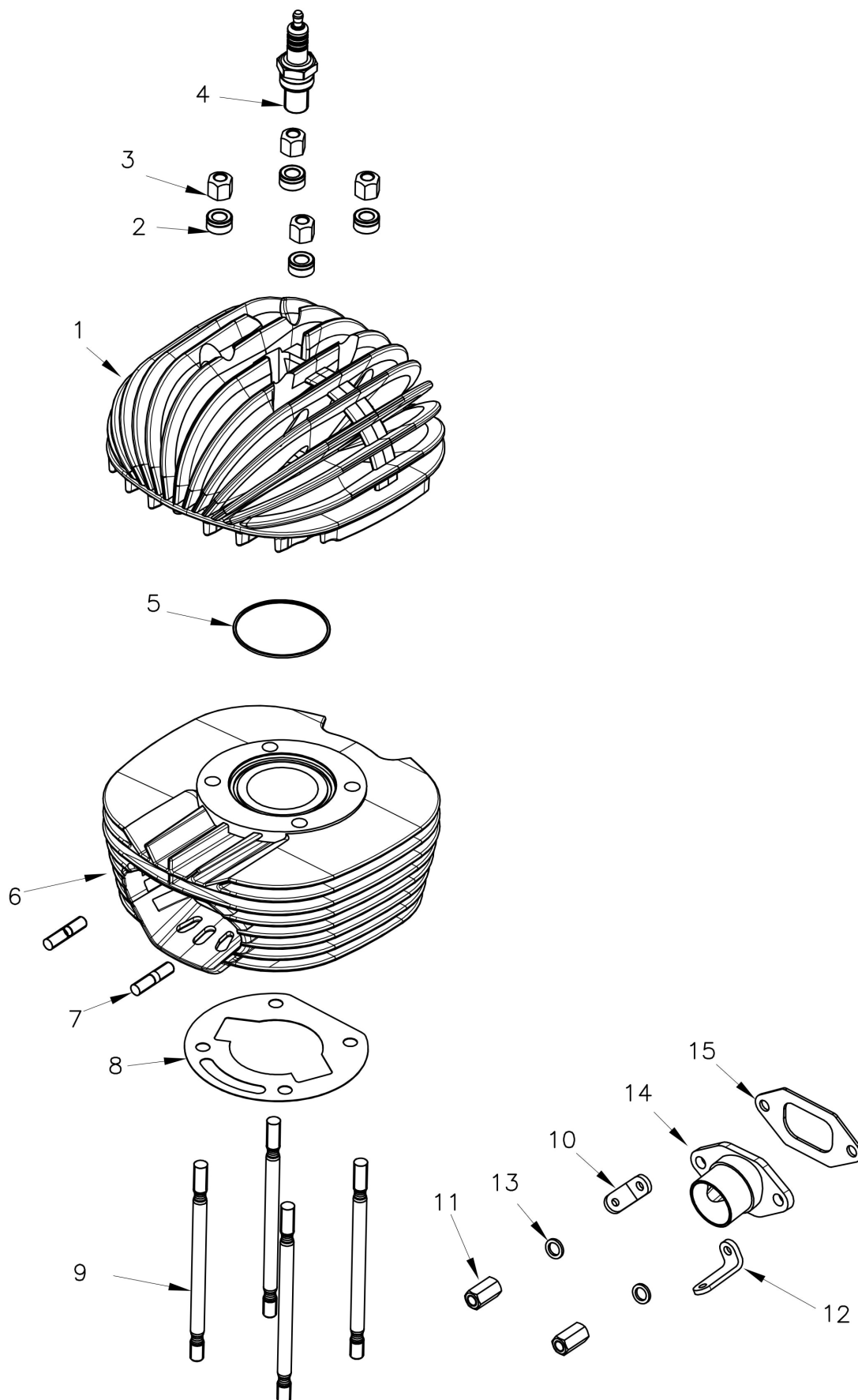
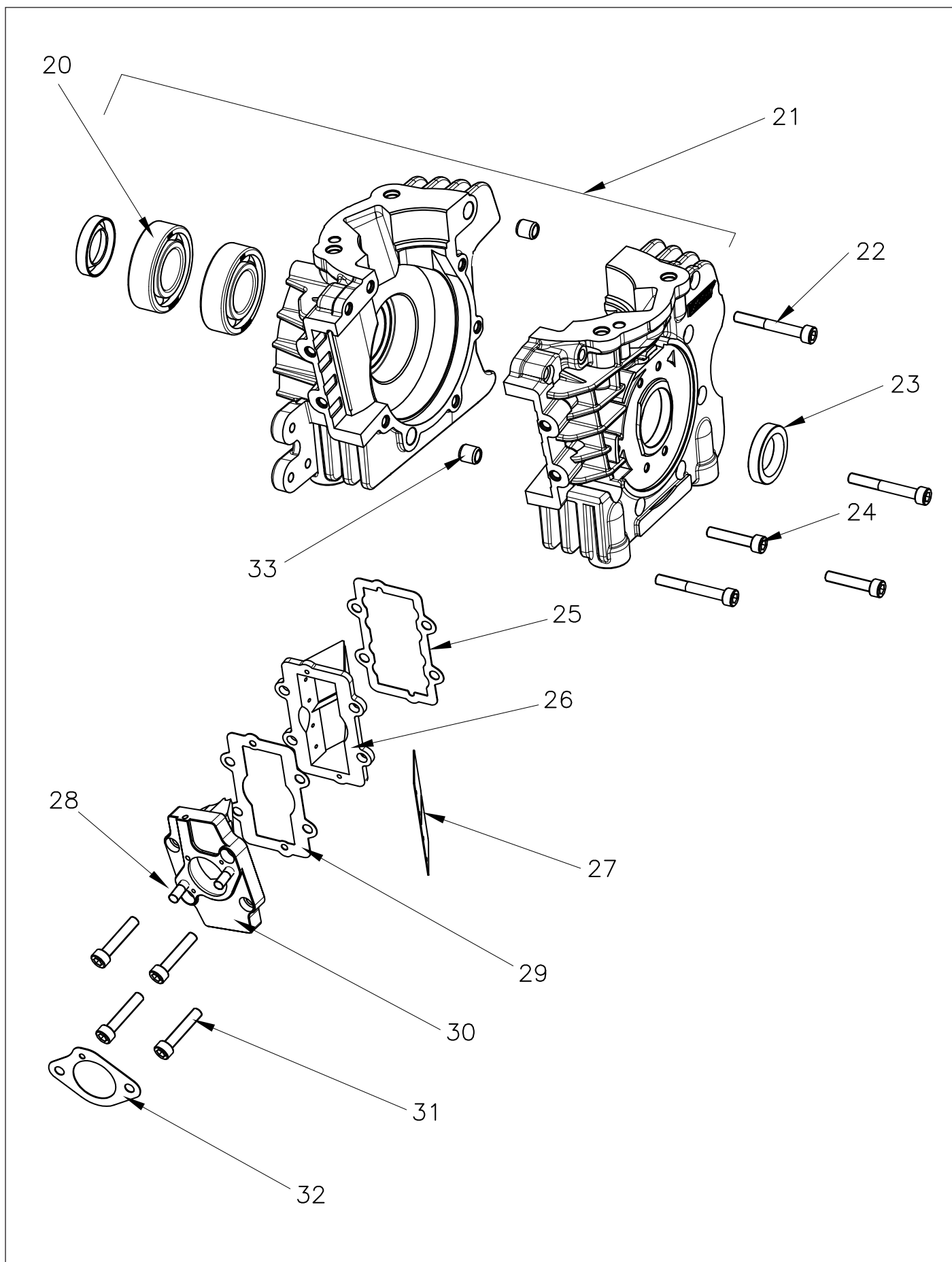


# VLR 100

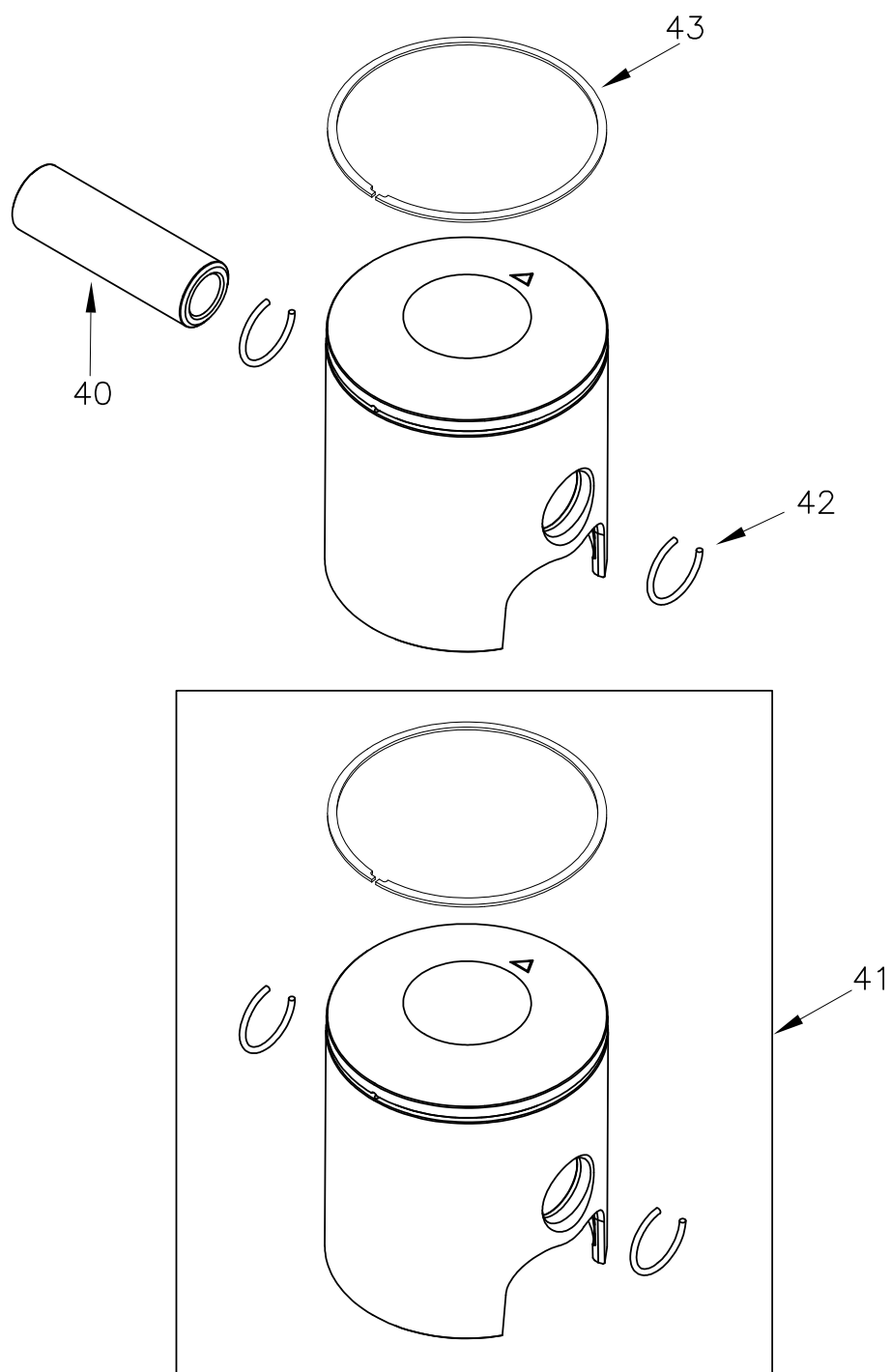




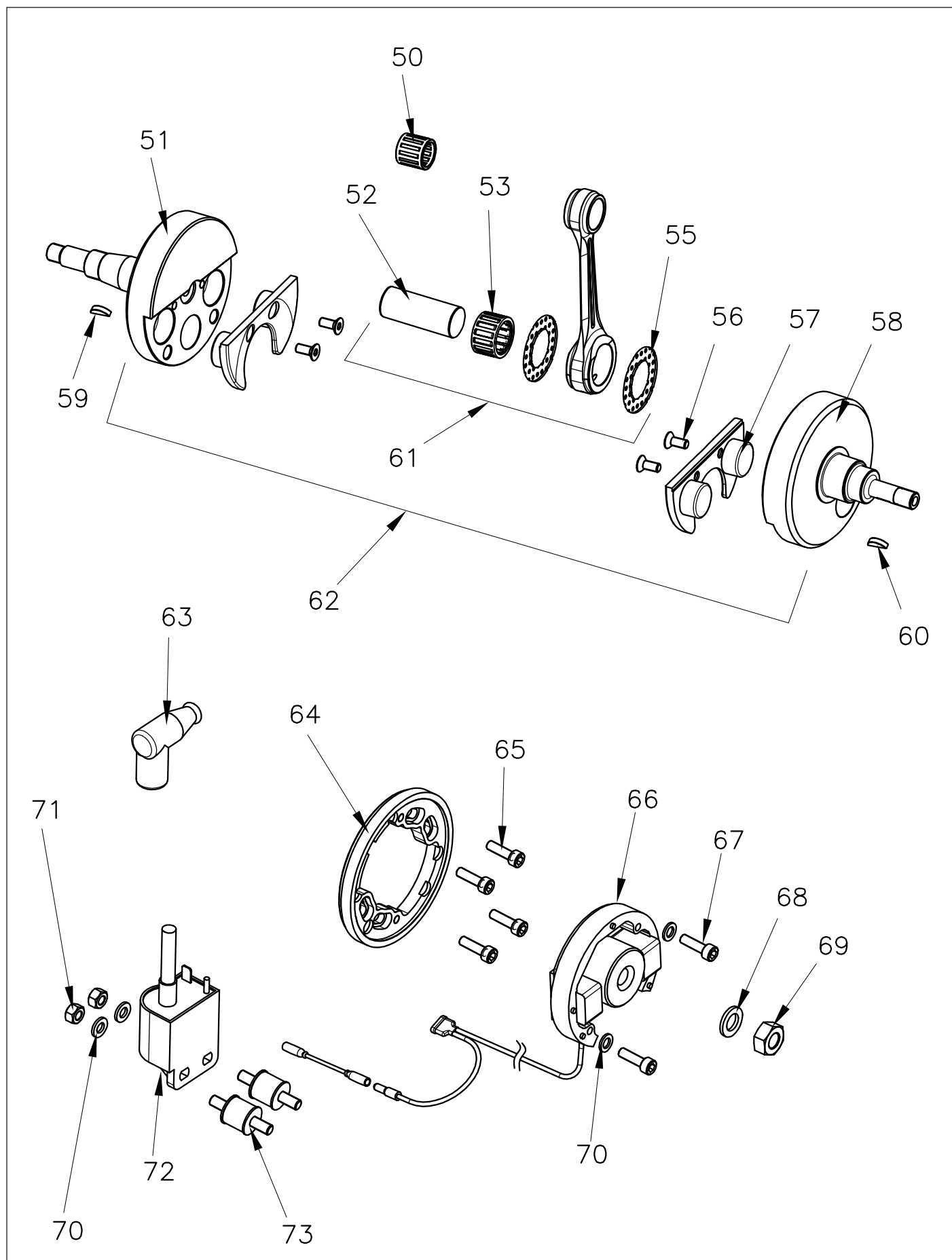
Rif.	Cod.	Descrizione	Description	N°	\$
1	W7000900300300	Testa	Head	1	266,65
2	W560	Rondella testa 8,5x15x8	Head washer 8,5x15x8	1	2,85
3	W530/ 12	Dado nicotra M8 ZNB	Head-nut high-set M8 ZNB	1	2,15
4	W003	Candela NGK b10 eg	Spark plug NGK b10 eg	1	12,30
5	W620	O-ring testa 2237 NBR	O-ring head 2237 NBR	1	1,50
6	W7000700300400	Cilindro	Cylinder	1	541,80
7	W470	Prigioniero scarico M7x32	Exhaust stud bolt M7x32	1	3,65
8	W702417100010A	Guarnizione cilindro 0,2	Cylinder basis gasket 0,2	1	2,85
8	W702417100010B	Guarnizione cilindro 0,3	Cylinder basis gasket 0,3	1	2,85
8	W702417100010C	Guarnizione cilindro 0,4	Cylinder basis gasket 0,4	1	2,85
8	W702417100010D	Guarnizione cilindro 0,5	Cylinder basis gasket 0,5	1	2,85
9	W7004281000100	Prigionieri cilindro	Cylinder stud bolt	1	7,15
10	W702428730020B	Staffa attacco molla	Exhaust spring bracket	1	1,50
11	W540/RVA	Dado colonnetta M7	Nut M7	1	2,15
12	W702428730020A	Staffa attacco molla	Exhaust spring bracket	1	1,50
13	W565	Rondella scarico 8x12x1,5	Exhaust washer 8x12x1,5	10	1,50
14	W7002463000100	Collettore di scarico	Exhaust manifold	1	81,25
15	W670	Guarnizione scarico	Exhaust gasket	1	8,50



Rif.	Cod.	Descrizione	Description	N°	\$
20	W300/A4	Cuscinetto banco 6205 c4	Insert crankcase 6205 c4	1	8,51
21	W7070301000600	Premontaggio basamento	Assembled crankcase	1	541,80
22	V.TCE6X45	Vite brugola M6x45	Socket-head screw M6x45	10	1,90
23	W310	Paraolio FPJ 20x35x7 doppio labbro	Oilseal FPJ 20x35x7 double lips	1	4,30
24	V.TCE6X30	Vite brugola M6x30	Socket-head screw M6x30	10	1,30
25	W641/A05	Guarnizione piramide lamell. lunga 0,5	Long reed v.pyramid gasket 0,5	1	1,50
26	W7000403700100	Pacco lamellare completo	Complete reed pyramid	1	93,60
27	W7000449700100	Lamella	Carbon petal	1	24,20
28	W480/1	Prigioniero carburatore/pacco Lamellare M6x16+R12	Reed valve pyramid/carburettor studbolt M6x16+R12	1	1,10
29	W651/A05	Guarnizione convogliatore piramide lamellare 0,5	Conv./long.r.v.pyr:gasket 0,5	1	1,50
30	WA386/1	Convogliatore	Conveyor	1	8,50
31	V.TCE6X25	Vite brugola M6x25	Socket-head screw M6x25	10	1,75
32	W660/RVA	Guarnizione carburatore d.24-1mm.	Carburettor gasket d.24-1mm.	1	1,50
33	W075/1	Bussola carter 10x10,5x6,5	Crankcase dowel 10x10,5x6,5	1	3,65

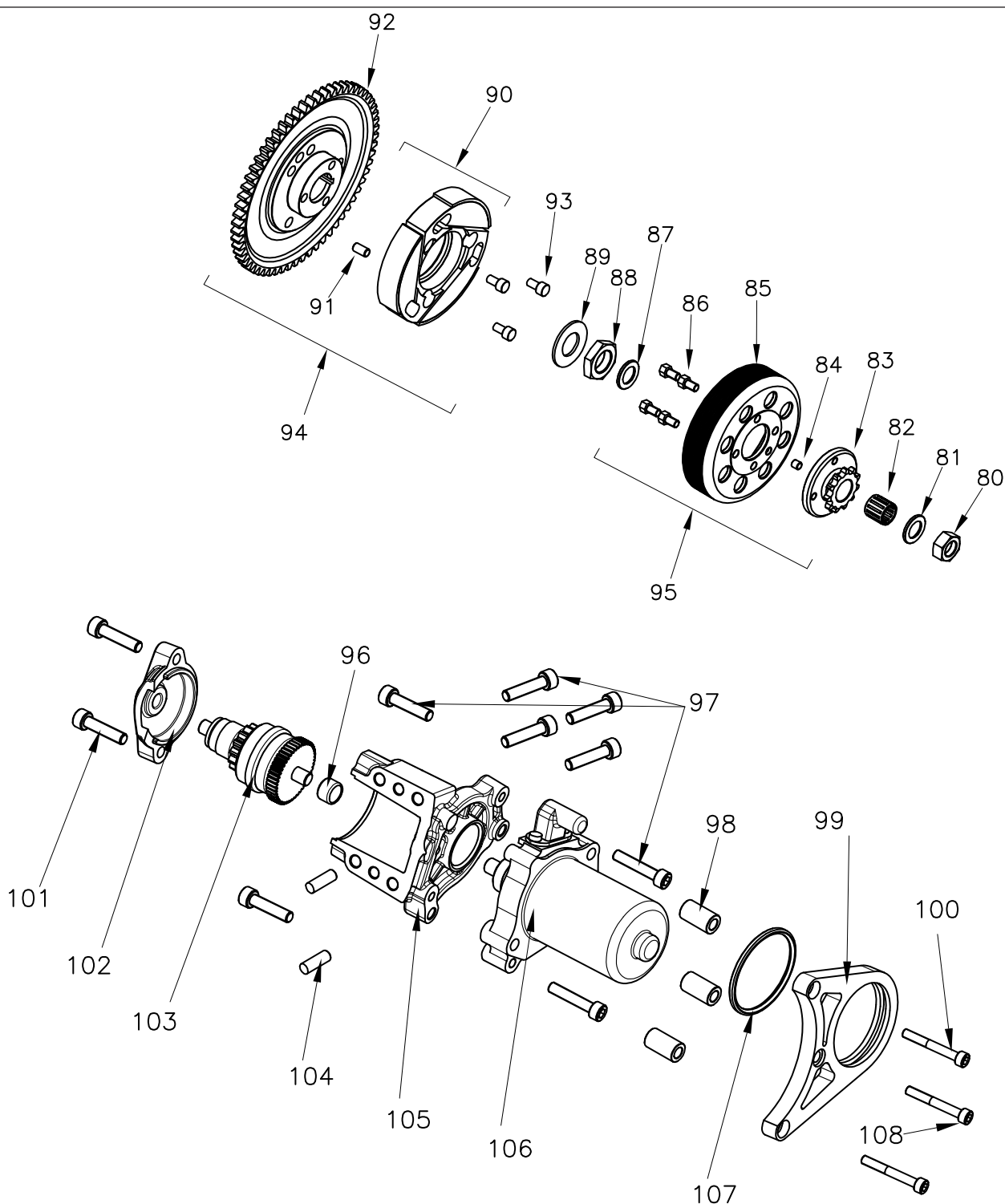


Rif.	Cod.	Descrizione	Description	N°	\$
40	W7000115000200	Spinotto	Piston pin	1	8,51
41	W700011100040A	Pistone completo 48,20	Complete piston 48,20	1	85,10
41	W700011100040B	Pistone completo 48,22	Complete piston 48,22	1	85,10
41	W700011100040C	Pistone completo 48,24	Complete piston 48,24	1	85,10
41	W700011100040D	Pistone completo 48,26	Complete piston 48,26	1	85,10
41	W700011100040E	Pistone completo 48,28	Complete piston 48,28	1	85,10
41	W700011100040F	Pistone completo 48,30	Complete piston 48,30	1	85,10
42	W7000116000200	Anellino fermo spinotto	Piston circlip	10	2,85
42	W7000114000300	Segmento	Piston ring	1	29,05

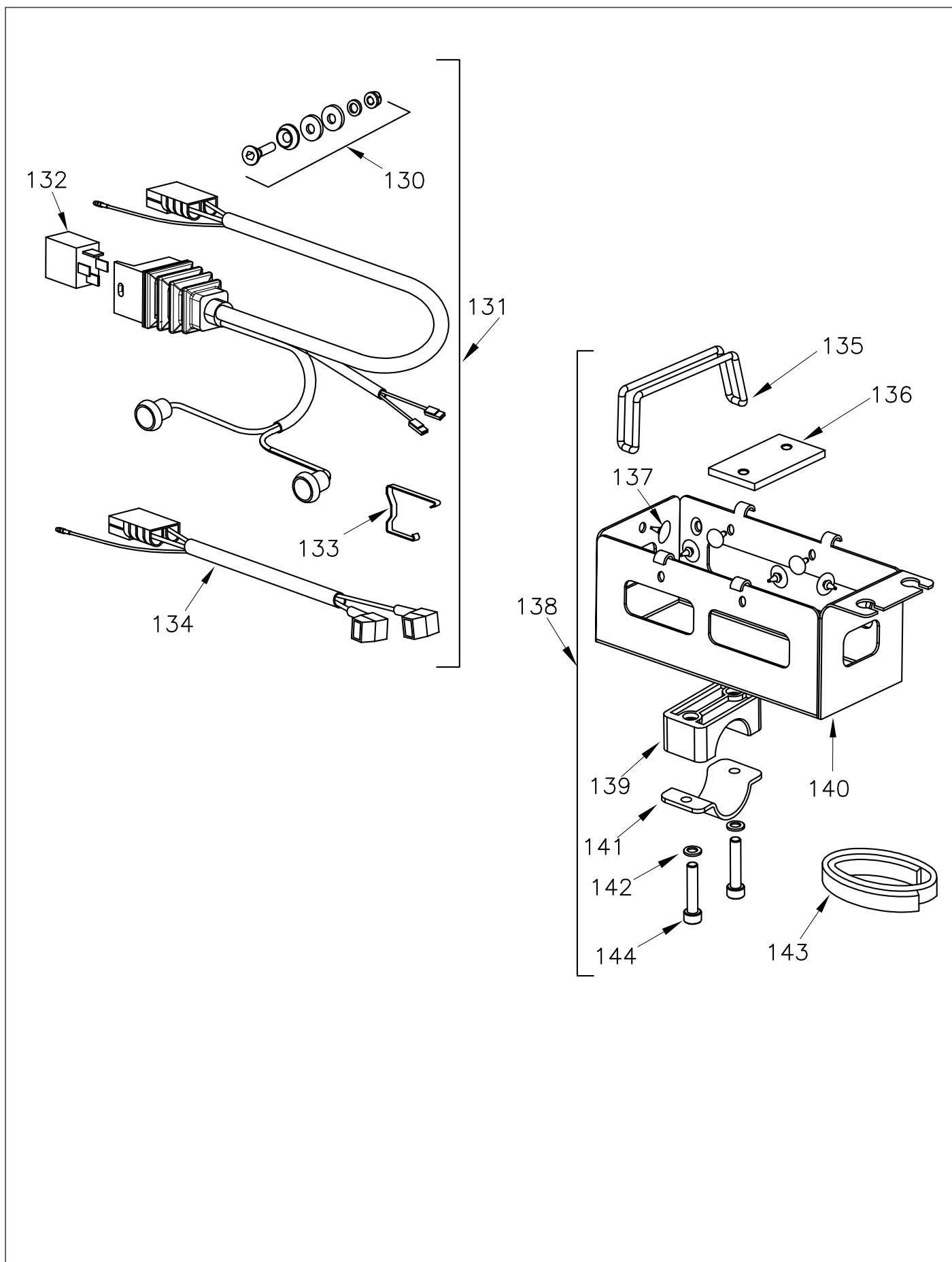




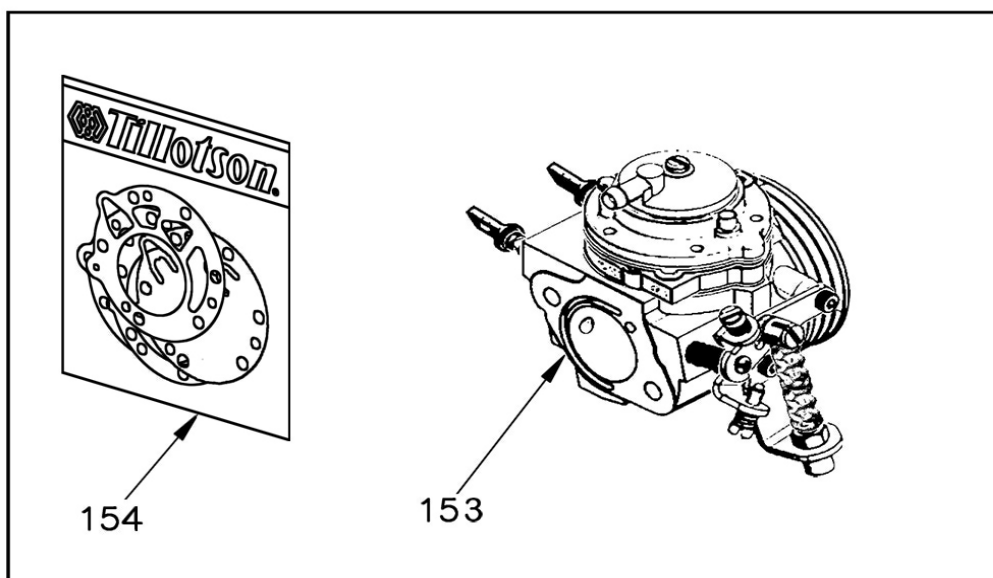
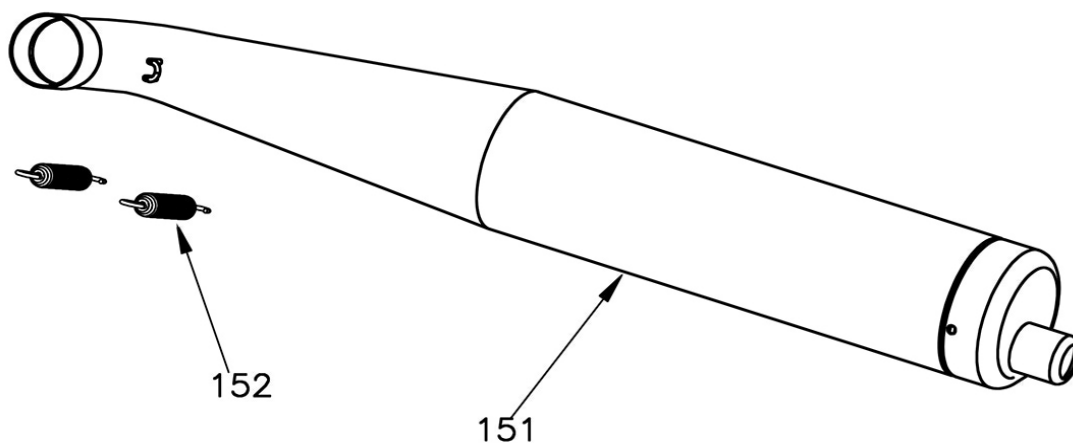
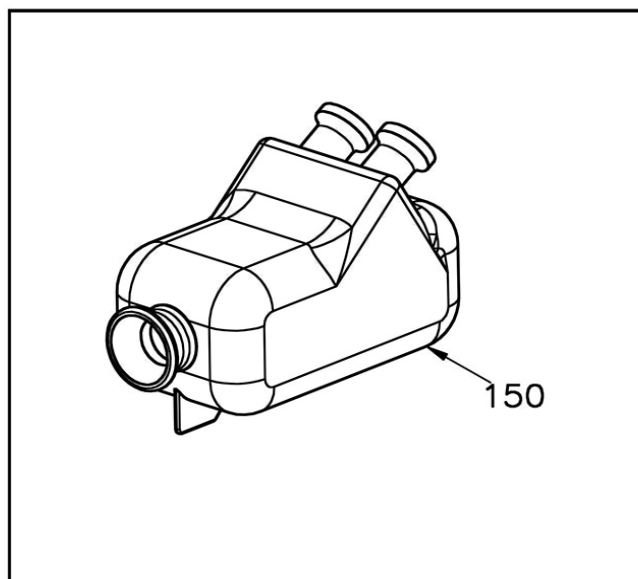
Rif.	Cod.	Descrizione	Description	N°	\$
50	W10085	Gabbia piede biella 15x19x20 B2	Small end needle cage 15x19x20 B2	1	10,00
51	W150/RKT	Semialbero lato trazione	Drive side half crankshaft	1	156,00
52	W200/KF	Asse accoppiamento albero	Crankshaft pin	1	19,20
53	W10320/B6	Gabbia argentata iko 20x26x15 B6	Silver - plated cage iko 20x2x15 B6	1	44,05
55	W10310/KF	Ralla argentata d.20,1 a stella	Silver-plated shim d.20,1	1	3,65
56	W522/12	Vite TSCE M5x12	Flathead screw M5x12	10	0,80
57	W160/KF	Guancetta nylon	Nylon crankshaft stuffer	1	0,80
58	W140/RKT	Semialbero lato accensione	Ignition side half crankshaft	1	177,35
59	W121	Chiavetta lato accensione 3x3.7x10	Key 3x3.7x10	1	0,80
60	W122	Chiavetta lato accensione 2,5x3,7x10	Key 2,5x3,7x10	1	0,80
61	W7000121000100	Biella cpl	Complete conrod	1	347,60
62	W7000135000100	Albero motore completo	Complete crankshaft	1	679,50
63	W420/2	Pipetta candela per accensione digitale	Spark cap for digital ignition	1	13,50
64	W7002243300100	Supporto statore	Stator support	1	59,60
65	W524/14	Vite brugola ribassata M5x14	Socket head screw M5x14	10	0,80
66	W407/MR	Accensione nuda Mini Rok	Mini Rok bare ignition	1	106,45
67	V.TCE5X20	Vite brugola M5x20	Socket-head screw M5x20	10	0,95
68	W1777/MR	Ralla accensione 10.4X18X2	Ignition Washer 10.4x18x2	10	0,80
69	W529/0108	Dado esagonale C18 pf 5587 M10x1	Hexagonal C18 pf 5587 nut M10x1	10	4,30
70	W570/12	Rondella piana 6x12x1.5 ZNB	Flat washer 6x12x1.5 ZNB	10	0,80
71	W531/06	Dado esagonale M6x1	Hexagonal nut M6x1	10	0,80
72	W410/MR	Bobina selettora	Selettora coil	1	75,25
73	W440	Silent-block fissaggio bobina	Silent-block	1	3,65



Rif.	Cod.	Descrizione	Description	N°	\$
80	W696/MR	Dado pignone	Sprocket nut	1	11,60
81	W1777/1ROK	Ralla frizione 10,1x18,8x2	Clutch washer 10,1x18,8x2	1	1,50
82	W1715	Gabbia rullini frizione K12x15x15	Clutch cage K12x15x15	1	3,65
83	W690/MR10C	Pignone z10 con ranella	Sprocket z10 with washer	1	40,00
84	W1766/ROK	Rullo d.5x5 T.P. G2	Roller d.5x5 T.P. G2	10	4,30
85	W1773/MR2	Campana frizione nuda	Mini Rok-Mr3 bare clutch housing	1	52,30
86	W523/O8	Vite TE M5x8	Flathead screw M5x8	10	1,10
87	W1726	Rondella spessore 19,5x12,1x1,8	Washer 19,5x12,1x1,8	1	1,50
88	W1727	Dado serraggio corpo frizione M16x1 filetto sx.	Clutch bodyfix nut M16x1 thr.	1	5,70
89	W1708	Molla a tazza 16.3x31.5x1.5	Spring washer 16.3x31.5x1.5	1	0,80
90	W1751/1KFC	Rotore frizione con spina	Complete clutch rotor with pin	1	97,15
91	W1766/1ROK	Spina cilindrica 6x12	Cylindrical pin 6x12	1	1,10
92	W1753/MR	Ingranaggio avviamento Z62	Starting driven gear Z62	1	99,30
93	W510/14	Vite brugola M6x14 8.8	Socket-head screw M6x14 8,8	10	0,80
94	W1763/MR10	Campana frizione completa c/pign. z10 e ralla	Compl.clutch housing w/spr. z10 & washer	1	78,10
95	W1750/1MR	Rotore frizione completo c/ingr. Mini rok-Mr3	Mini Rok-Mr3 compl.clutch rotor with gear	1	176,55
96	W924	Astuccio a rullini bk0808	Roller case bk0808	1	2,85
97	V.TCE6X30	Vite brugola M6x30	Socket-head screw M6x30	10	1,30
98	W975/MR	Distanziale sostegno avviamento	Starter support spacer	1	3,65
99	W970/MR	Sostegno avviamento d.50 Mini Rok-Mr3	Mini Rok-Mr3 starter support d.50	1	58,65
100	V.TCE6X65	Vite brugola M6x65	Socket-head screw M6x65	10	4,80
101	V.TCE6X20	Vite brugola M6x20	Socket-head screw M6x20	10	1,00
102	W910/ROK	Coperchio rinvio avviamento	Starter driving gear cover	1	19,35
103	W916/ROK	Rinvio avviamento 50589	Starter driving gear 50589	1	49,70
104	W019	Spina cilindrica 6x18	Cylindrical pin 6x18	10	8,70
105	W960/RKT	Supp. rinvio aviam. sm-5 Mini Rok-MR3	Mini Rok-MR3 transmission starter support	1	93,50
106	W940/2ROK	Motorino avviamento 50589	Starter 50589	1	174,10
107	W972/MR	O.R.4200 NBR sostegno avviamento	O.R. 4200 NBR starter support	1	2,05
108	V.TCE6X40	Vite brugola M6x40	Socket-head screw M6x40	10	2,05



Rif.	Cod.	Descrizione	Description	N°	\$
130	W2103/ROK4	Kit viteria cablaggio Rok	Harness bolts and screws Rok kit	1	5,90
131	W2103/MRKIT	Cablaggio impianto elettrico Kid Rok-Mini Rok-Mr3	Mini Rok-Kid Rok-Mr3 complete wiring	1	188,65
132	W2119/ROK	Relè 12V-70A	Relay 12V-70A	1	29,10
133	W2103/ROK3	Molletta cablaggio	Harness fixing clip	1	2,95
134	W2103/MROK2	Cablaggio secondario	Secondary wiring harness	1	20,45
135	W881	Cinghiolo supporto batteria	Belt accumulator support	1	1,10
136	0274.A1	Piastrina filettata supp. Batteria	Threaded plate for engine	1	3,70
137	W2121/ROK	Gommino supporto batteria	Accumulator support rubber	10	5,90
138	W2122/1ROKC	Supporto batteria completo Gp-Rok Jr	Gp-Rok Jr accumulator support w/brackets	1	67,80
139	0274.A2B	Coppia cavallotti nylon D. 30	Couple of nylon brackets D.30	1	4,25
140	0274.D0	Supporto batteria	Accumulator support	1	60,80
141	0274.A3	Cavalotto ferro supporto batteria	Iron bracket for battery supp.	1	7,40
142	R.P.6X11	Rondella piana 6x11	Plain washer 6x11	10	0,45
143	0274.A4	Guarnizione bloccaggio batteria	Sponge of battery's locking	1	1,65
144	V.TCE6X40	Vite brugola M6x40	Socket-head screw M6x40	10	2,05



Rif.	Cod.	Descrizione	Description	N°	\$
150	0225.GLA22	Silenziatore aspirazione ARROW LA22	Intake silencer ARROW LA22	1	82,90
151	W7002468700100	Marmitta	Exhaust muffler	1	211,85
152	W10925/DDS	Molla scarico	Muffler spring	1	7,75
153	W7022803000300	Carburatore CPL	Complete carburettor	1	464,20
154	W7022800002100	Kit guarnizioni	Gasket kit	1	58,00

[www.vortex-engines.com](http://www.vortex-engines.com)